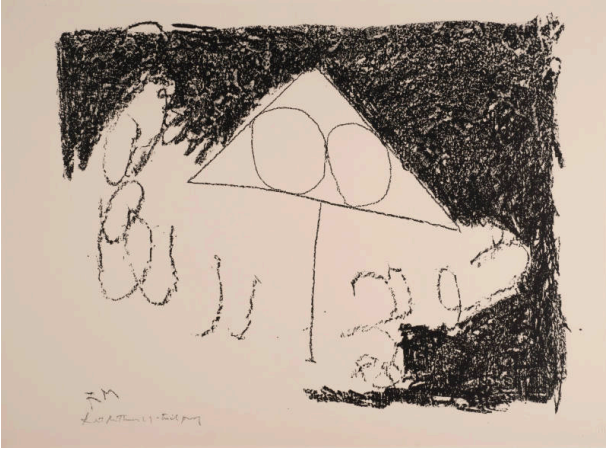


# Basic Detail Report

---



## The Madrid Suite, (plate 5)

**Date**

1965

**Primary Maker**

Robert Motherwell

**Medium**

Lithograph on buff Arches paper

**Description**

Triangle, containing two ovals, with bottom bisected by perpendicular line.

**Dimensions**

Overall: 22 1/4 x 30in. (56.5 x 76.2cm)