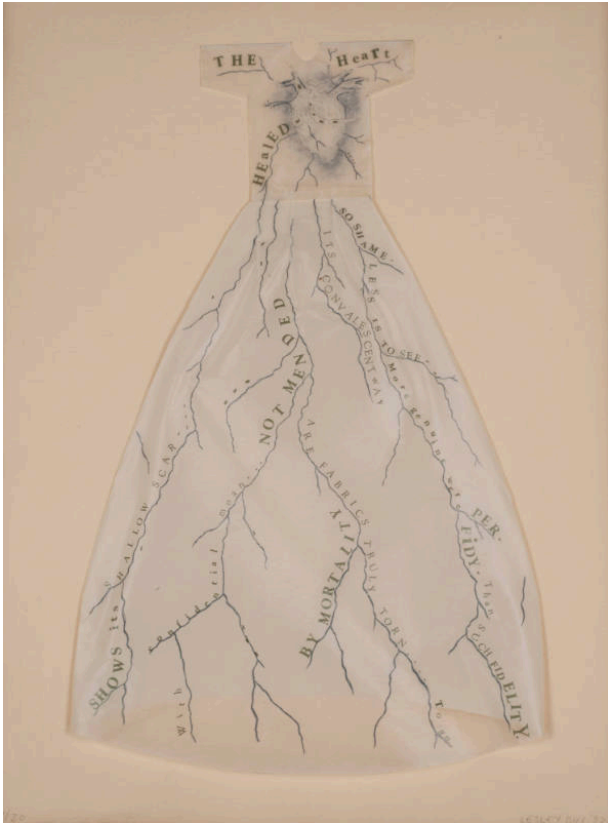


Basic Detail Report



The Poetic Body: Poem Dress of Circulation

Date

1992

Primary Maker

Lesley Dill

Medium

Lithograph, letterpress, and collage on paper

Description

Lithograph, letterpress and collage on Richard de Bas paper; This edition is 4 of 4 pieces from a series titled 'The Poetic Body'. This piece uses text from an Emily Dickinson poem printed by letterpress in green ink onto silk tissue. The poem appears on the face side of a dress with an image of a heart and veins drawn by the artist on

lithograph plate. This plate was printed in a single run using blue ink. The dress was cut and assembled with a sheet of kozo paper supporting the skirt. The dress is attached to a backing sheet of Richard de Bas paper.

Dimensions

Overall: 18 x 13in. (45.7 x 33cm)