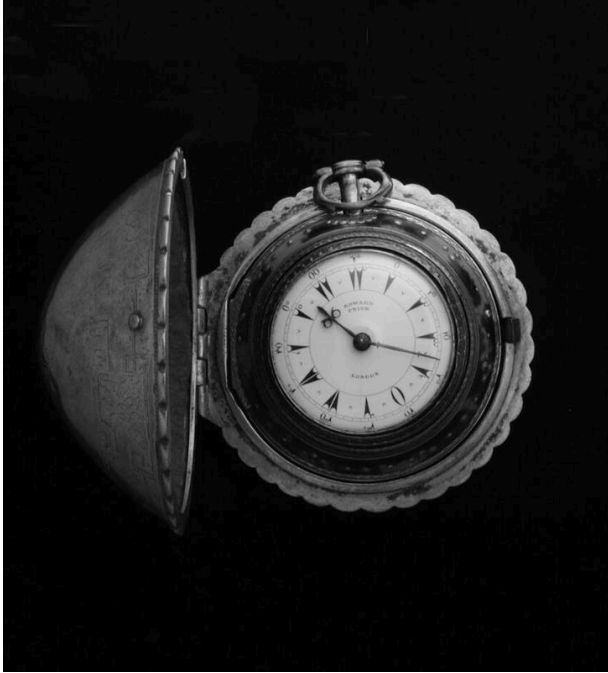


Basic Detail Report



Quadruple-case Watch for Turkish Market

Date

1866

Primary Maker

Edward Prior

Medium

Silver, tortoiseshell, gilt metal, enamel, steel

Description

Silver and tortoise shell quadruple case verge watch for the Turkish market. the outer case lightly engraved with six pointed star, garlands and vines within a scalloped border, second covered with tortoise shell, third plain silver, inner also plain

Dimensions

Overall: 2 15/16 in., (7.5 cm,)